

Figure 9-8 Bond breaks in wall-to-floor and wall-to-roof connections. (From Harry C. Plummer, *Brick and Tile Engineering*, Brick Industry Association, Reston, VA, 1962.)

of flexible anchors were discussed in Chapter 7, and *Figs. 9-9 and 9-10* show ways in which they are used. Seismic anchors for the attachment of veneers are designed to meet the requirements for Seismic Performance Categories D and E of the Masonry Standards Joint Committee (MSJC) *Building Code Requirements for Masonry Structures*, ACI 530/ASCE 6/TMS 402 (see Chapter 12).

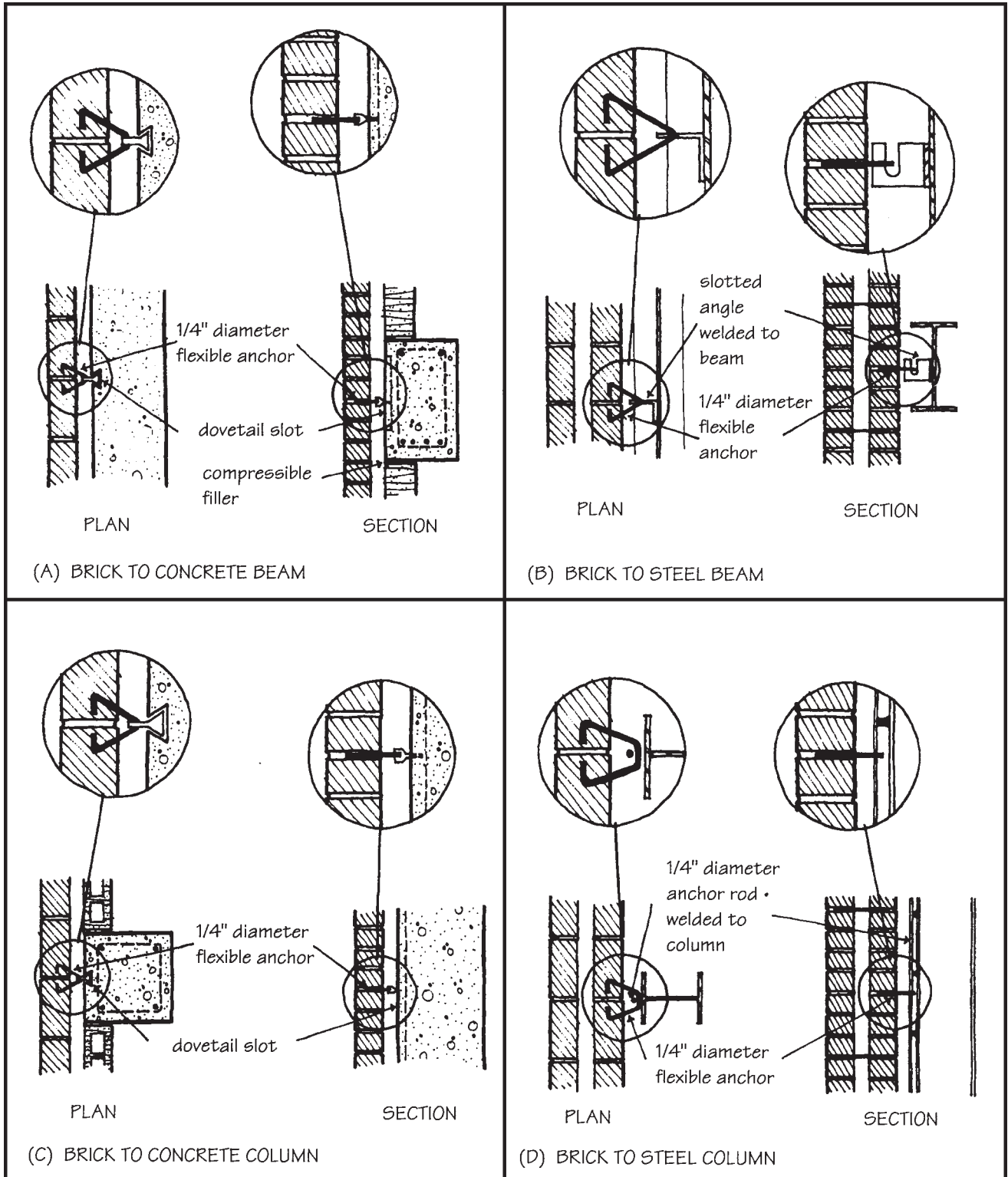


Figure 9-9 Flexible anchorage of brick masonry. (From BIA Technical Note 18.)